

# Application of ME010 & ME007 FR Window and Door Sealing Membrane at slab edge interfaces

## INSTALLATION GUIDANCE

## illbruck ME010 & ME007 FR Window & Door Sealing membrane installed using SP025 adhesive

This is an illustrated guide to demonstrate the correct method for installing illbruck ME010 FR Window and Door Sealing Membrane and illbruck ME007 FR Window and Door Sealing Membrane+, using illbruck SP025 Fire Membrane Adhesive.

This guide should be read in conjunction with the relevant illbruck Technical Data Sheets, Safety Data Sheets, and written method statements where available: <https://www.illbruck.com>.

Further on-site toolbox training can be arranged where required by contacting Tremco CPG UK Ltd.

### Please note:

The ME010 and ME007 membranes must be installed in the correct orientation, with the smooth/coated side facing outwards to the external environment.

All edges of the membrane must be securely bonded and consolidated with an uninterrupted 20 to 30 mm band of continuous adhesive around the entire perimeter of the membrane as described in this document.

Any deviation from illbruck's best practice installation guidance may affect the performance of the installed membrane and invalidate any warranties.

### Tools and accessories:

- Sharp retractable bladed knife or illbruck cutting shears
- Marker or pencil to mark out the membrane position
- Stout seam roller
- illbruck AA956 Sausage Gun 600 – Pro Combi or similar quality 600 ml applicator gun
- illbruck AT140 Primer for Porous Substrates
- 2" disposable paint brushes and pots for application of the primer

### Before commencing work:

- Ensure all surfaces are clean, dry and free from dust, grease and debris and free from any contaminants that may affect the adhesive bond.
- Any over spills or excess cured fire rated silicone or compounds should be mechanically removed from the face of the sheathing boards where the illbruck membrane will be applied.
- Illbruck AT140 primer should be used on any friable concrete surfaces or over silicone based sealant components, especially where they have been applied to seal the joints between the sheathing boards.
- illbruck ME010 and ME007 should always be directly bonded to the substrate and must not be lapped and adhered to an existing membrane.
- Where the membrane interfaces with a third-party waterproofing or similar material, seek further advice on compatibility from Tremco CPG UK Ltd.

## Application method:

### Step 1:

Perimeter membrane application shall always start at the bottom edge of the interface between the sheathing board and slab edge.

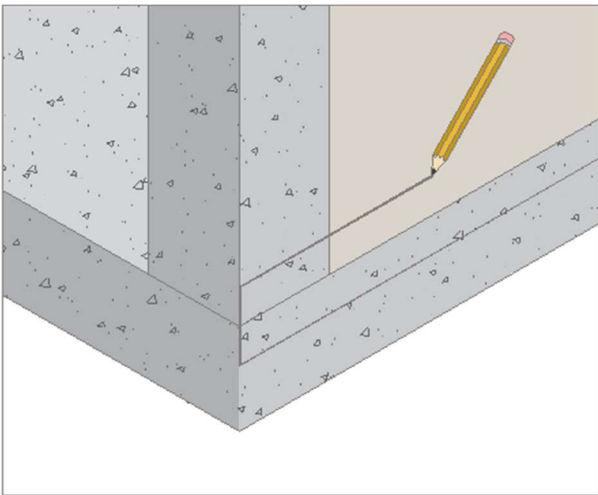


Figure 1

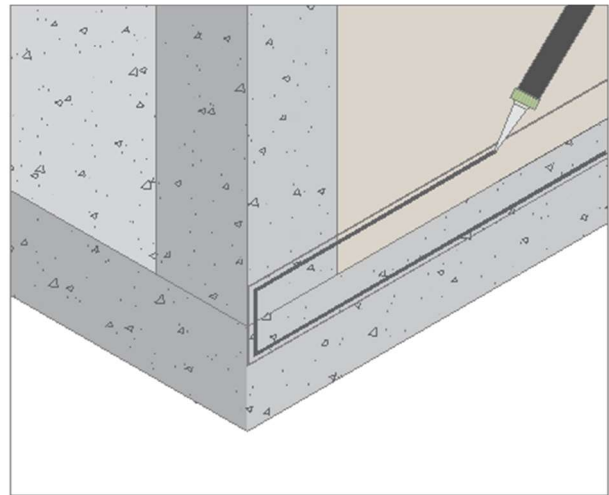


Figure 2

Determine the required membrane width and length.

The recommended vertical lap on to both the sheathing board and slab is 100 mm (50 mm minimum).

Make a mark indicating the membranes position (Figure 1).

Apply a 10 mm diameter bead of SP025 adhesive with the centre of the bead positioned 15 mm inside of the marked line (Figure 2).

Using the palm of your hand, offer up the membrane and gently press the membrane on to the adhesive ribbon.

Any required overlaps must be a minimum 100 mm and the overlap fully bonded with SP025.

## Step 2:

Consolidating the bond.

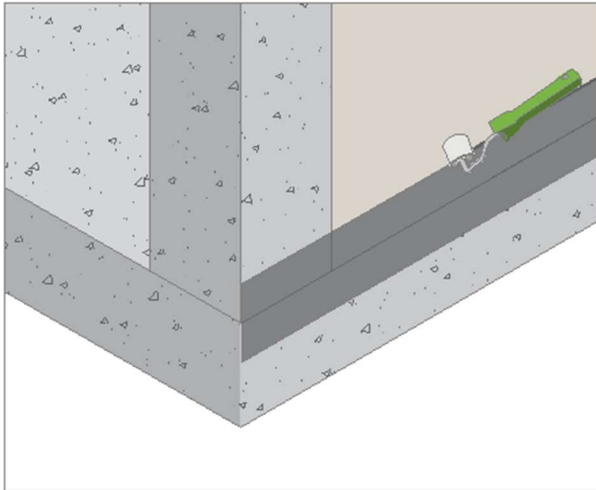


Figure 3

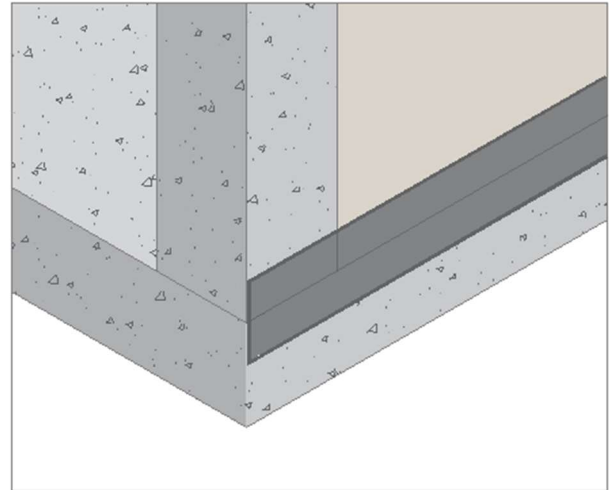


Figure 4

Starting at one end, apply firm pressure with an illbruck seam roller and roll over the top of the membrane where the adhesive is located underneath.

As you work along the length of the membrane, the adhesive will begin to visibly ooze out from under the membrane's edge. When the visible ooze is a uniform 2 - 5 mm wide along the entire run, the adhesive is consolidated (Figure 3).

It is not necessary to smooth or scrape away the excess ooze and it acts as a visual indicator that the adhesive has been applied in the correct location, in the correct proportions and has been fully consolidated (Figure 4). In situations where the depth and thickness of the ooze potentially interferes with activities carried out by follow-on trades or the seating of attachments, it is recommended that this excess ooze is carefully spread and flattened using a flat blunt bladed tool, such as a wooden /plastic spatula or sealant finishing tool, ensuring that the membrane is not subject to damage.

### Steps 3 & 4:

The membrane at the vertical jambs shall be installed next, with the head being installed last.

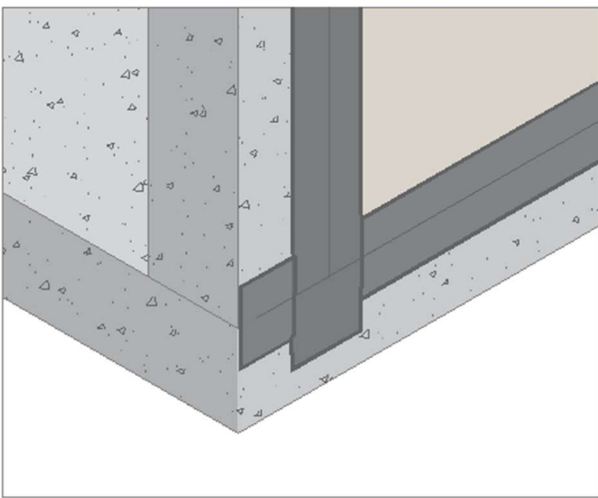


Figure 5

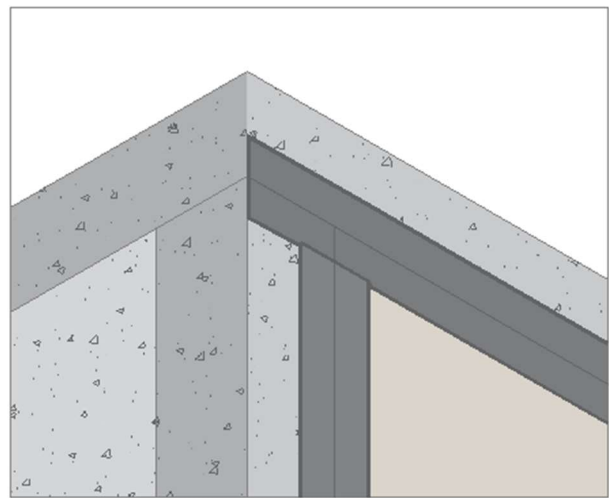


Figure 6

The membrane length shall have an excess of 50 mm below the previously installed membrane at the base of slab and sheathing board junction (Figure 5) and 50 mm above the line of the sheathing board at the head to enable bonding to the primary substrate.

Make a mark of the membranes position and install a 10 mm diameter bead of SP025 with the centre of the bead 15 mm inside of the mark, carefully press the membrane into position and consolidate the bond as previously described in Step 2.

Finally repeat the process for the head (Figure 6).

Your installation is now complete.

## Support

Here at Tremco CPG UK Ltd, we have technical experts and field support teams who can help you – from specification to application, we're on hand.

If you're looking for more information about fire rated membranes, or how to pick the right membrane for your application, please contact our team: **[hello@tremcocpg.com](mailto:hello@tremcocpg.com)**.

**Tremco CPG UK Limited,**  
**Hindley Green, Wigan WN2 4HT**  
**T. +44 (0) 1942 251 400**  
**[hello@tremcocpg.com](mailto:hello@tremcocpg.com)**  
**[www.tremcocpg.eu](http://www.tremcocpg.eu)**

*Information contained in this document conforms to the standard illbruck method of installation as of the date of publication of this document and is presented for guidance only and in good faith. Tremco CPG UK Ltd. assumes no liability, expressed or implied, as to the architecture, engineering, or workmanship of any project. To ensure that you are using the latest, most complete information, contact Tremco CPG UK Ltd.*

Issue 4: 21/03/25